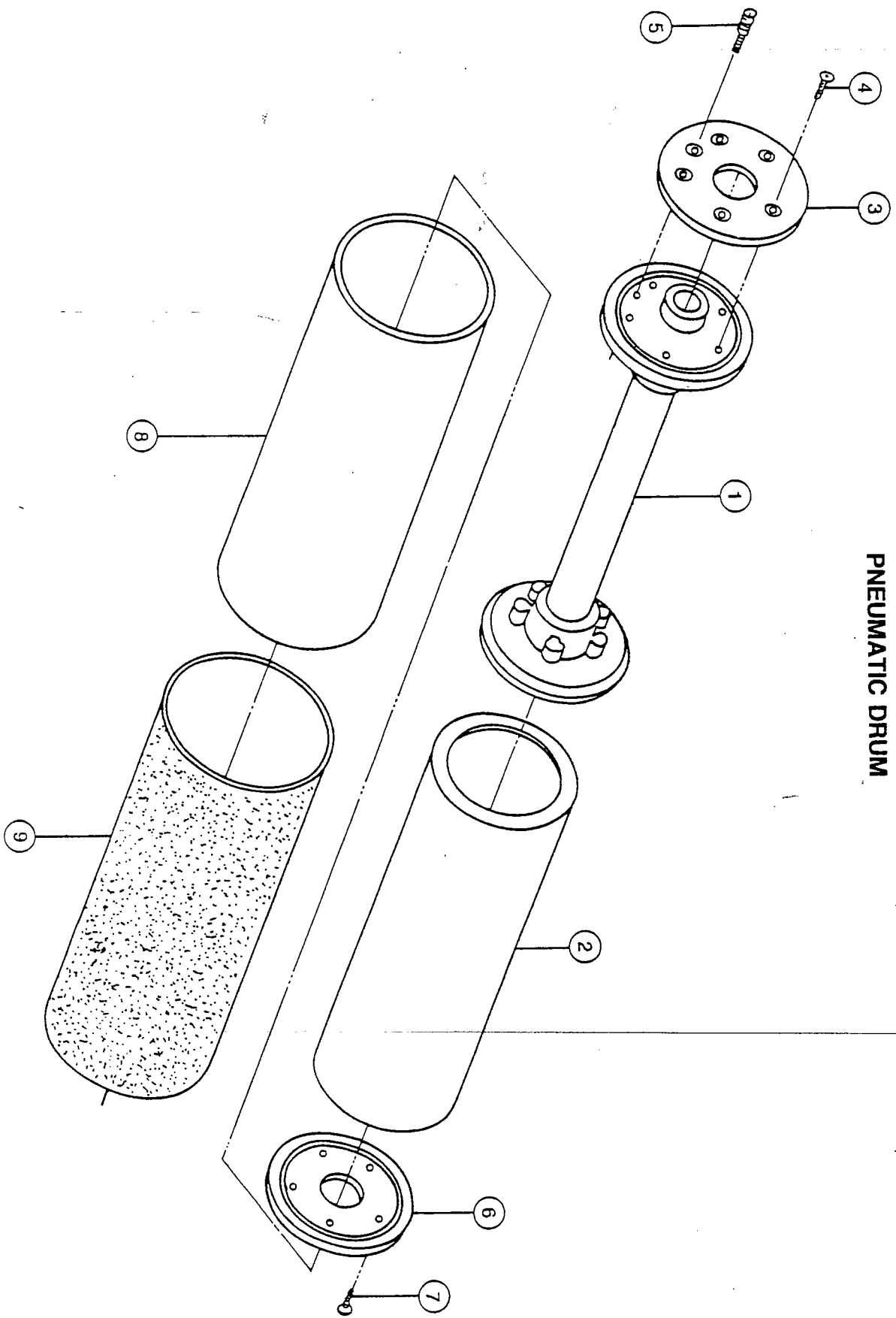


PNEUMATIC DRUM



N PARTS FOR PNEUMATIC DRUM

		DESCRIPTION	QUANTITY
MODEL: PD-39			
FIG. NO.	PARTS NO.		
1.	3001	Pneumatic Drum Shaft	1
2.	3002	Rubber Drum	1
3.	3003	Left Side Cover	1
4.	3004	Screw Flat Hd. Mach 3/16"-24NC	5
5.	3005	Tuyere	1
6.	3006	Right Side Cover	1
7.	3007	Flat Hd. Mach. screw 3/16"-24NC	5
8.	3008	Canvas Cover	1
9.	3009	Sand Paper(40/60/80/100 Grit)	1
MODEL: PD-49			
FIG. NO.	PARTS NO.		
1.	4001	Pneumatic Drum Shaft	1
2.	4002	Rubber Drum	1
3.	4003	Left Side Cover	1
4.	4004	Screw, Flat Hd. Mach 3/16"-24NC	5
5.	4005	Tuyere	1
6.	4006	Right Side Cover	1
7.	4007	Flat Hd. Mach Screw 3/16"-24NC	5
8.	4008	Canvas Cover	1
9.	4009	Sand Paper (40/60/80/100 Grit)	1
MODEL: PD-69			
FIG. NO.	PARTS NO.		
1.	6001	Pneumatic Drum Shaft	1
2.	6002	Rubber Drum	1
3.	6003	Left Side Cover	1
4.	6004	Screw, Flat Hd. Mach 3/16"-24NC	5
5.	6005	Tuyere	1
6.	6006	Right Side Cover	1
7.	6007	Flat Hd. Mach. Screw 3/16"-24NC	5
8.	6008	Canvas Cover	1
9.	6009	Sand Paper (40/60/80/100 Grit)	1
MODEL: PD-89			
FIG. NO.	PARTS NO.		
1.	8001	Pneumatic Drum Shaft	1
2.	8002	Rubber Drum	1
3.	8003	Left Side Cover	1
4.	8004	Screw, Flat Hd. Mach 3/16"-24NC	5
5.	8005	Tuyere	1
6.	8006	Right Side Cover	1
7.	8007	Flat Hd. Mach. Screw 3/16"-24NC	5
8.	8008	Canvas Cover	1
9.	8009	Sand Paper (40/60/80/100 Grit)	1

Q PARTS FOR BRUSH HEAD

FILE
BOS 499

	DESCRIPTION	QUANTITY
<p><i>Pacific Abrasive Supply</i> <i>Burena Park, Ca.</i></p> <p><i>For Sand Paper Fax</i> <i>714-994-2040</i> <i>4723.</i></p> <p>800-543-5589 www.rlcarriers.com</p>		
<p><i>BH49-2</i></p> <p>MODEL: BH-49 Aluminum</p> <p>FIG. NO. PARTS NO.</p> <p>1. 4001A</p> <p>2. 4002A</p> <p>3. 4003A</p> <p>4. 4004A</p> <p><i>BH49-</i></p>	<p><i>aluminum</i></p> <p>Brush —</p>	1
	Brush Head Body	1
	Sand Paper —	1
	Cover	1
<p>MODEL: BH-69 Aluminum</p> <p>FIG. NO. PARTS NO.</p> <p>1. 6001A</p> <p>2. 6002A</p> <p>3. 6003A</p> <p>4. 6004A</p>	<p>Brush</p> <p>Brush Head Body</p> <p>Sand Paper</p> <p>Cover</p>	1 1 1 1

FILE

PART NUMBER

*** DESCRIPTION ***

00056499-01
00056499-02
00056499-03
00056499-04
00056499-05
00056499-06
00056499-07
00056499-08
00056499-09
00056499-10
00056499-11
00056499-12
00056499-13
00056499-14
00056499-15
00056499-16
00056499-17
00056499-18
00056499-19
00056499-20
00056499-21
00056499-22
00056499-23
00056499-24
00056499-25
00056499-26
00056499-27
00056499-28
00056499-29
00056499-30
00056499-31
00056499-32
00056499-33
00056499-34
00056499-35
00056499-36
00056499-37
00056499-38
00056499-39
00056499-40
00056499-41
00056499-42
00056499-43
00056499-44
00056499-45
00056499-46
00056499-47
00056499-48
00056499-49
00056499-50
00056499-51
00056499-52
00056499-53
00056499-54
00056499-55
00056499-56
00056499-57
00056499-58
00056499-59
00056499-60
00056499-61
00056499-62
00056499-63
00056499-64
00056499-65
00056499-66
00056499-67
00056499-68
00056499-69
00056499-70
00056499-71
00056499-72
00056499-73
00056499-74
00056499-75
00056499-76

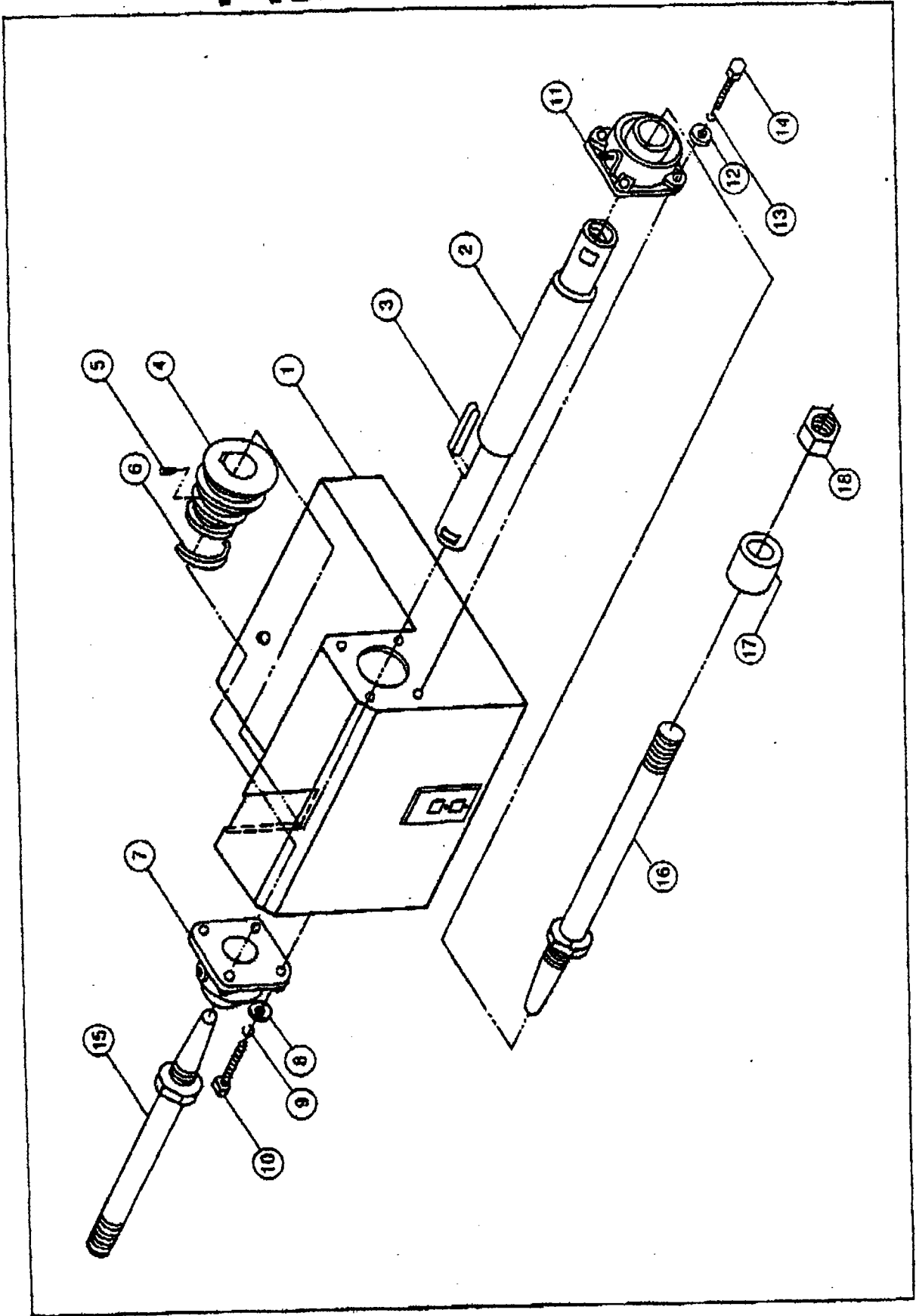
MAIN FRAME
WASHER 5/16
SPRING WASHER 5/16
HEX HD SCREW 5/16X5/8
MOTOR SUPPORT
SUPPORT
MOTOR
WASHER 5/16
HEX HD SCREW 5/16X3/4
SPRING WASHER 5/16
HEX NUT 5/16
SUPPORT SHAFT
KNOB
FIT PLATE
WASHER 5/16
HEX HD SCREW 5/16X3/4
SPRING WASHER 5/16
HEX NUT 5/16
KEY 7X7X40MM
MOTOR PULLEY
SET SCREW 5/16X3/8
V BELT A25 **** (999928) **
BELT GUARD
RD HD SCREW 3/16X1/4
WASHER 1/4
WING SCREW 1/4X1/2
COMPLETE STAND
WASHER 5/16
HEX HD SCREW 5/16X3/4
WASHER 5/16
SPRING WASHER 5/16
HEX NUT 5/16
MAIN SPINDLE
KEY
SPINDLE PULLEY
SET SCREW 5/16X3/8
V BELT - A25 (999928)
PILLOW BLOCK BEARING UCF207
WASHER 3/8
SPRING WASHER 3/8
HEX HD SCREW 3/8X1-1/4
PILLOW BLOCK BEARING UCF207
WASHER 3/8
SPRING WASHER 3/8
HEX HD SCREW 3/8X1-1/4
SLEEVE SPINDLE **ORDER DESK**
SLEEVE SPINDLE **ORDER DESK**
COLLAR 2"
HEX NUT
CONTROL SWITCH *Use ITS10-146A*
FRONT PLATE
REAR PLATE
WASHER 5/16
HEX HD SCREW 5/16X3/4
WASHER 5/16
SPRING WASHER 5/16
HEX NUT 5/16
TOOL REST
WASHER 5/16
HEX HD SCREW 5/16X3/4
WASHER 5/16
SPRING WASHER 5/16
HEX NUT 5/16
RUBBER FOOT
HEX HD SCREW 1/4X3/4
WASHER 1/4
SPRING WASHER 1/4
HEX NUT 1/4

FILE B05-427

K ASSEMBLY OF MAIN FRAME WITH SPINDLES

ITEM NO.	PART NO.	DESCRIPTION	QTY
18.		Hexagon nut 1"-8NC right side left side	1pc 1pc
1.	01-02	Main frame	1pc
2.	06-01	Main spindle	1
3.		Key 5/16 x 5/16" x 40mm L	1
4.	05-06	Pulley, spindle	1
5.		Set screw 5/16 x 3/8"	1
6.		V belt A25	1
7.		Pillow block bearing UCF207	1
8.		Washer 3/8"	4
9.		Spring washer 3/8"	4
10.		Hexagon head screw 3/8" x 1-1/4"	4
11.		Pillow block bearing UCF207	1
12.		Washer 3/8"	4
13.		Spring washer 3/8"	4
14.		Hexagon head screw 3/8" x 1-1/4"	4
15.	05-02B	Left side sleeve spindle	1
16.	05-02C	Right side sleeve spindle	1
17.	05-02D	Collar 2" width (Right side) Collar 2" width (Left side)	1 1

FILE

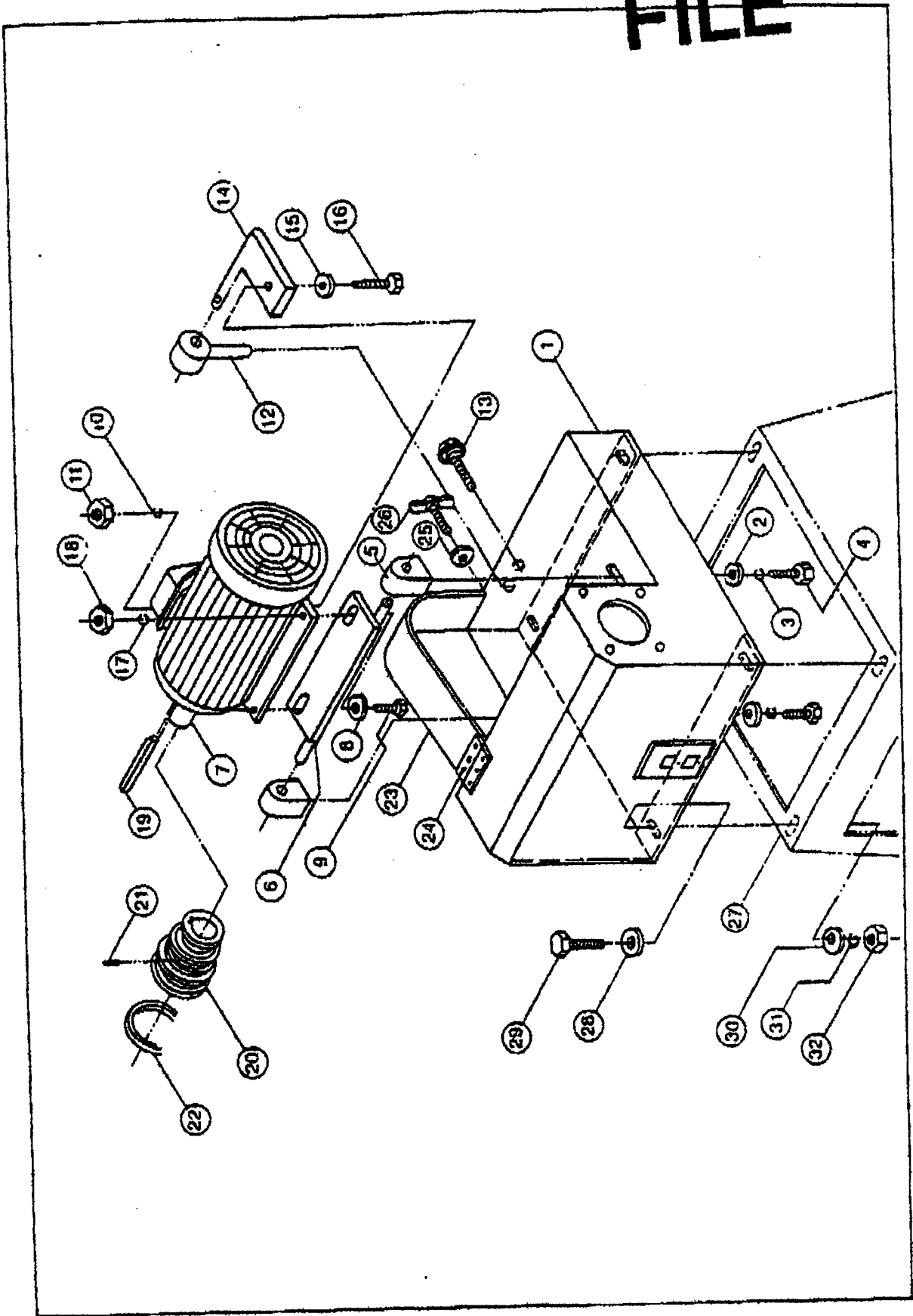


FILE

L ASSEMBLY OF MOTOR WITH MAIN FRAME 305-499

ITEM NO.	PART NO.	DESCRIPTION	QTY
1.	01-02	Main frame	1pc
2.		Washer 5/16"	2
3.		Spring washer 5/16"	2
4.		Hexagon head screw 5/16" x 5/8"	2
5.	10-02	Support, motor	2
6.	10-01	Support	1
7.		Motor	1
8.		Washer 5/16"	2
9.		Hexagon head screw 5/16" x 3/4"	2
10.		Spring washer 5/16"	2
11.		Hexagon nut 5/16"	2
12.	10-03	Support shaft	1
13.		Plastic handle screw 5/16" x 1"	1
14.	10-04	Fit plate	1
15.		Washer 5/16"	1
16.		Hexagon head screw 5/16" x 3/4"	1
17.		Spring washer 5/16"	1
18.		Hexagon nut 5/16"	1
19.		Key 7 x 7 x 40mm	1pc
20.	10-05	Pulley, motor	1
21.		set screw 5/16" x 3/8"	1
22.		V belt A25	1
23.	09-05	Belt guard	1
24.		Round head screw 3/16" x 1/4"	3
25.		Washer 1/4"	1
26.		Wing screw 1/4" x 1/2"	1
27.	01-01	Stand	1
28.		Washer 5/16"	4
29.		Hexagon head screw 5/16" x 3/4"	4
30.		Washer 5/16"	4
31.		Spring washer 5/16"	4
32.		Hexagon nut 5/16"	4

FILE

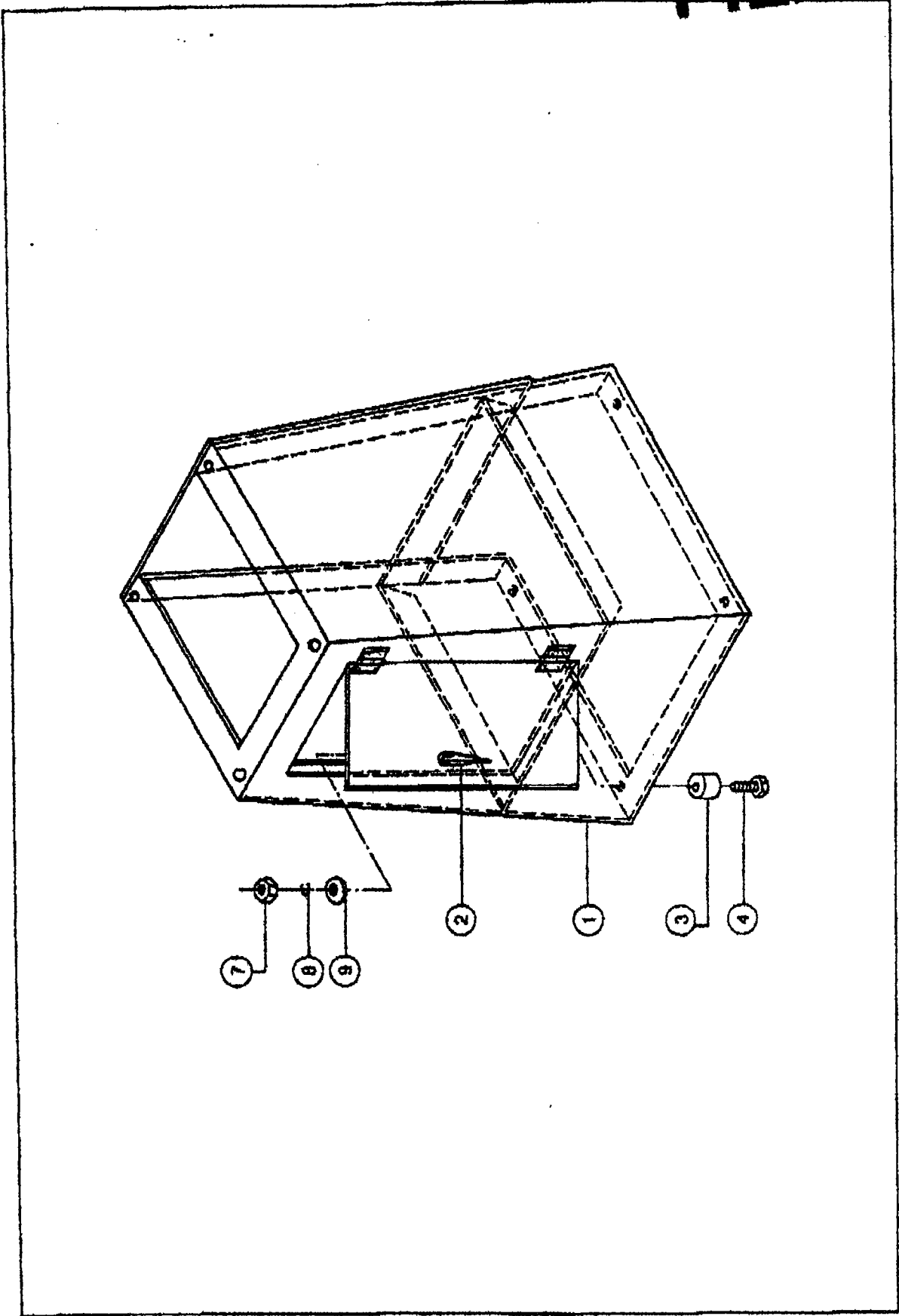


FILE
BDS-499

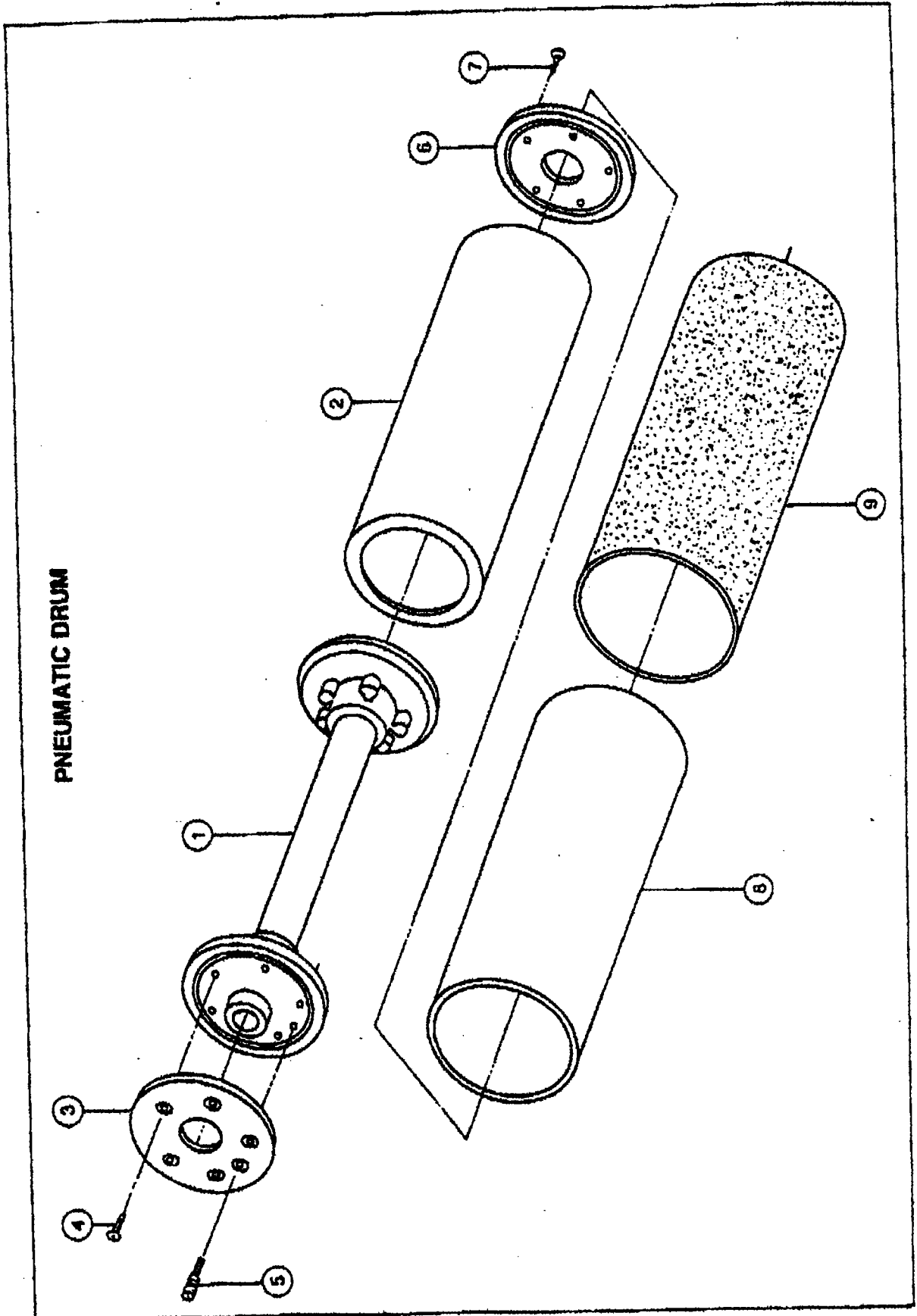
M PARTS OF STAND

PART NO.	DESCRIPTION	QUANTITY
1.	STAND FOR SPINDLE SANDER	1SET
2.	DOOR, TOOL BOX	1PC
3.	RUBBER MAT	4PCS
4.	SCREW FOR RUBBER MAT	4PCS
5.	FLAT WASHER	4PCS
6.	SPRING WASHER	4PCS
7.	NUT	4PCS

FILE



FILE



FILE

PARTS FOR PNEUMATIC DRUM

Parts
PD49-2 →

		DESCRIPTION	QUANTITY
MODEL: PD-39			
FIG. NO.	PARTS NO.		
1.	3001	Pneumatic Drum Shaft	1
2.	3002	Rubber Drum	1
3.	3003	Left Side Cover	1
4.	3004	Screw Flat Hd. Mach 3/16"-24NC	5
5.	3005	Tuyere	1
6.	3006	Right Side Cover	1
7.	3007	Flat Hd. Mach. screw 3/16"-24NC	5
8.	3008	Canvas Cover	1
9.	3009	Sand Paper(40/60/80/100 Grit)	1
MODEL: PD-49			
FIG. NO.	PARTS NO.		
1.	4001	Pneumatic Drum Shaft	1
2.	4002	Rubber Drum <i>Bladder</i>	1
3.	4003	Left Side Cover	1
4.	4004	Screw, Flat Hd. Mach 3/16"-24NC	5
5.	4005	Tuyere	1
6.	4006	Right Side Cover	1
7.	4007	Flat Hd. Mach Screw 3/16"-24NC	5
8.	4008	Canvas Cover	1
9.	4009	Sand Paper (40/60/80/100 Grit)	1
MODEL: PD-69			
FIG. NO.	PARTS NO.		
1.	6001	Pneumatic Drum Shaft	1
2.	6002	Rubber Drum	1
3.	6003	Left Side Cover	1
4.	6004	Screw, Flat Hd. Mach 3/16"-24NC	5
5.	6005	Tuyere	1
6.	6006	Right Side Cover	1
7.	6007	Flat Hd. Mach. Screw 3/16"-24NC	5
8.	6008	Canvas Cover	1
9.	6009	Sand Paper (40/60/80/100 Grit)	1
MODEL: PD-89			
FIG. NO.	PARTS NO.		
1.	8001	Pneumatic Drum Shaft	1
2.	8002	Rubber Drum	1
3.	8003	Left Side Cover	1
4.	8004	Screw, Flat Hd. Mach 3/16"-24NC	5
5.	8005	Tuyere	1
6.	8006	Right Side Cover	1
7.	8007	Flat Hd. Mach. Screw 3/16"-24NC	5
8.	8008	Canvas Cover	1
9.	8009	Sand Paper (40/60/80/100 Grit)	1

BDS-499

FILE

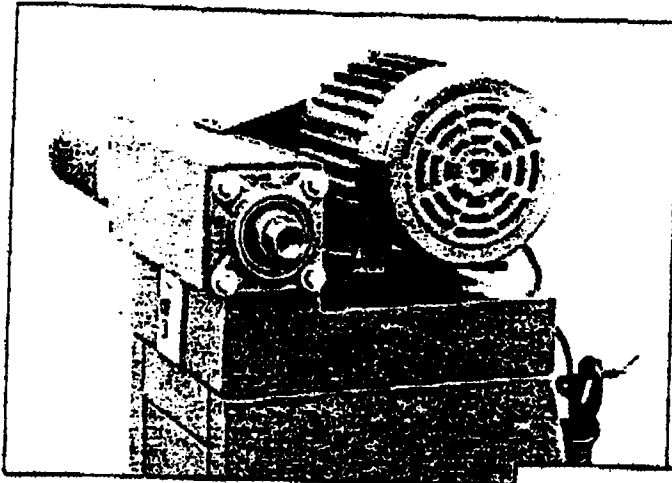


Fig. 1

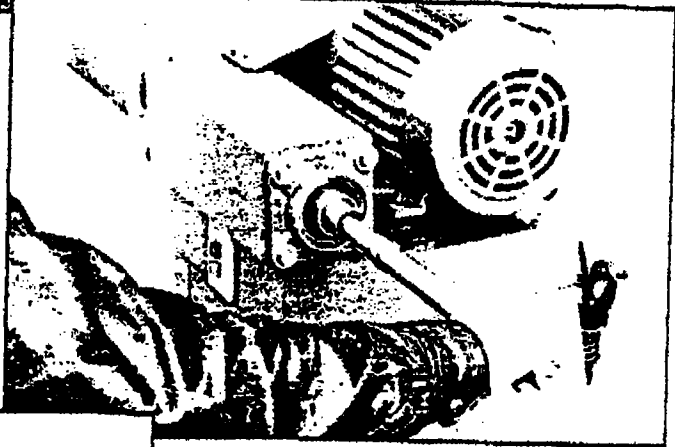


Fig. 2

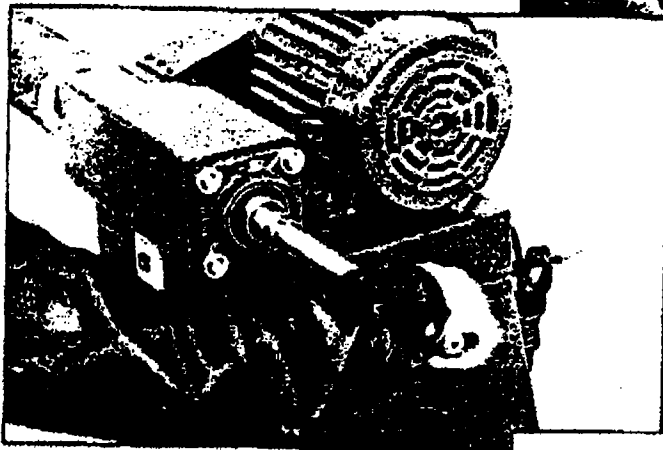


Fig. 3

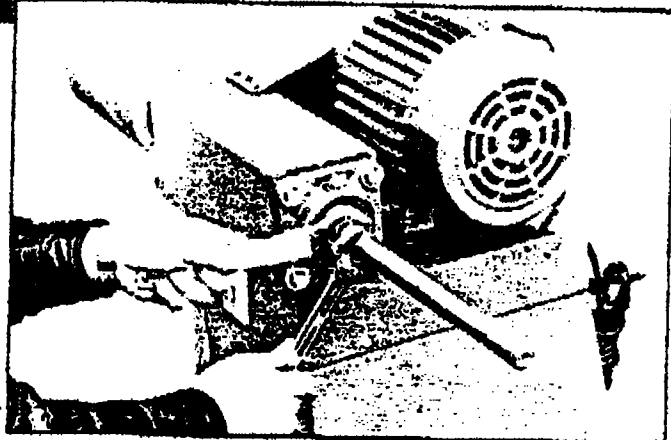


Fig. 4

847-390-1625

FIL

90 111

BH49-3

for Sand Paper Part # 3 - cust can order direct from Supplier. Pacific Abrasive Supply, in Ca. Phone # 714-994-2040 fax 714-994-4723.

BRUSH HEAD (ALUMINUM)

